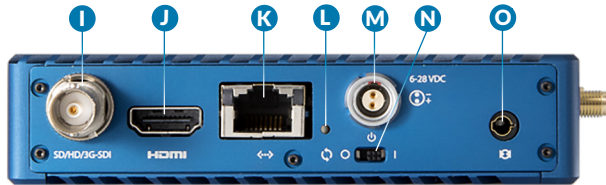




SERV PRO

REAL-TIME IOS MONITORING

Serv Pro is a wireless video transmitter that offers real-time monitoring on up to 10 iOS devices at very low latency. Serv Pro can be mounted on a camera or at video village, and offers up to 300 ft of range using its built-in Wi-Fi access points.



- A: Wi-Fi antenna
- B: Video input status
- C: Encoder status
- D: Broadcast status
- E: Fault/Error
- F: OLED display
- G: Stream joystick
- H: Menu joystick
- I: SD/HD/3G-SDI input
- J: HDMI input
- K: 10/100/1000 Ethernet
- L: Reset button
- M: Power input
- N: Power switch
- O: Mic/Line stereo input

Stream Joystick:

- (button press): Access quick menu actions, exit menu screens

Menu Joystick:

- ▲, ▼, ◀, ▶: Select menu items, change status screen on main display, select characters
- (button press): Confirm selection, open selected menu

Reset Button:

- Hold for 3-6 seconds: Reset all network settings
- Hold for 10+ seconds: Perform complete factory reset

PHYSICAL CONNECTIONS

1

- 1 Connect power to Serv Pro using the included A/C adapter, or one of the available accessory power cables ([see Teradek.com](http://www.teradek.com)).
- 2 Connect the SDI or HDMI output from your video source to one of Serv PRO's video input connectors (I, J).

CONNECT TO SERV PRO

2

CONNECT VIA WI-FI

Use the Menu joystick to navigate to the **Network Setup** menu, then select a Wi-Fi mode.

Access Point (AP) Mode - AP mode is automatically enabled by default. Connect your device to Serv Pro's Wi-Fi network: Teranet-XXXXX (serial number of the device).

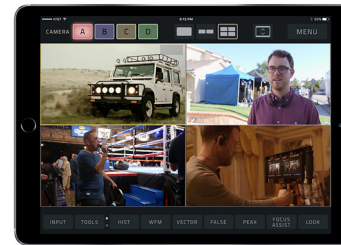
Infrastructure Mode - To configure Serv Pro to connect to a different network, switch to Infrastructure mode, then select "Scan for Network."

CONNECT VIA ETHERNET

Connect your computer to the same network as Serv Pro. Use the Menu joystick to navigate to the **Network Setup** menu, then select **Wired** to verify that Ethernet is set to DHCP and to view Serv Pro's IP address.

MONITOR WITH VUER

3



VUER is a free iOS application that allows you to monitor and analyze up to four live HD video feeds simultaneously, each with its own set of tools to help you and your crew gain insights into your footage.

- 1 Download VUER from the iTunes App Store.
- 2 Connect your iOS device to the same network as Serv Pro (Ethernet or WiFi), then launch VUER.
- 3 From the VUER app, tap **CAMERA** on the upper, left-hand corner, choose your device(s), then tap **Done**.
- 4 To adjust the stream resolution and bitrate, long-press **VIDEO** on the Tool bar (F) to display the full menu. Make your selection, then tap **APPLY**.

CONFIGURE SERV PRO

4

Serv Pro also has a web user interface (web UI) for configuring stream and network settings. The web UI can be accessed by using any available network interface.

- 1 Connect your computer to the same network as Serv Pro.
- 2 Use the Menu joystick to navigate to the **Network Setup** menu, then select **Wired** to verify that Ethernet is set to DHCP and to view Serv Pro's IP address. If using a Wi-Fi network, select **WiFi**, then select **[Status]** to view the IP address.
- 3 Open a web browser and enter Serv Pro's IP address in the address bar.

CONFIGURABLE SETTINGS

- **Encryption** - Enable or disable encryption.
- **Image Overlay** - Overlay imported images onto your video stream and adjust their placement.
- **Audio** - Configure the audio input source.
- **SDI Ancillary Data** - Extract timecode or closed captions data from the SDI input to embed into your stream.

NEED MORE HELP?

1 Support: <http://support.teradek.com> → Contains tips, information and all the latest firmware & software updates.
TERADEK SUPPORT STAFF: support@teradek.com or call 888-941-2111 ext.2 (Mon-Fri 6am to 6pm PST)